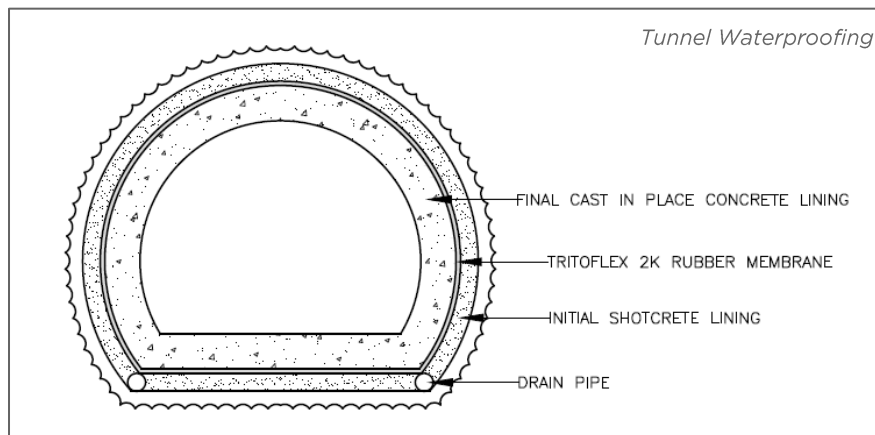
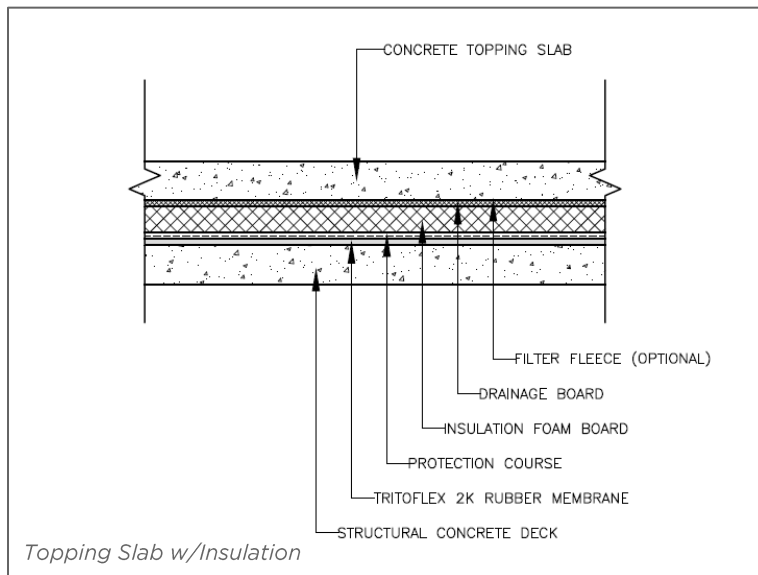


INSTALLATION GUIDE

TritoFlex 2K Rubber - Warranty Options

Warranty Period*	15 Years		20 Years	
	Min Dry Mils	Coverage Rate	Min Dry Mils	Coverage Rate
TritoFlex 2K Rubber	80	12 sf/gal	100	10 sf/gal

*Custom-tailored, single-source warranties are available



INSTALLATION GUIDE

TritoFlex 2K Rubber System

The TritoFlex 2K Rubber material is ideal for creating a durable, monolithic waterproofing membrane over any concrete substrate. TritoFlex 2K withstands ponding water indefinitely and is cold spray-applied to any thickness in one coat. With extreme flexibility and strength, it withstands structural movements and heavy compression. For a split-slab application, such as parking garages or tunnels, it's the right choice.

Advantages:

- ✓ Withstands ponding water indefinitely
- ✓ Sprayed to any thickness
- ✓ Water-based, no VOC's
- ✓ Rated for heavy impact
- ✓ Crack-bridging technology
- ✓ Extremely flexible and durable
- ✓ Cold spray-applied, no hot kettles or torches

Quick Guide

Inspection

- Check the existing substrate for areas of damage or deterioration that may need repaired
- If applying over concrete, check for moisture content using the plastic sheet method

Preparation

- Pressure wash entire surface to ensure roof is free of moisture, loose dirt, oils, grease, and debris. If applying over new concrete, use high pressure blasting to clean the surface.
- Over concrete, apply TritoPrime Concrete sealer. Over existing roof substrates, refer to substrate-specific guidelines.

Application

- Spray apply TritoFlex 2K at minimum mil thickness specified, starting at the low spots. Check for proper millage using the Triton mil thickness gauge. Re-spray spot where measurements are taken immediately to seal. If thickness was low, re-spray over area and measure again.
- Apply TritoFlex 1K Brush-Grade Rubber to seal edges of flashings, 90-degree angles, curbs, pipes, and where any visual imperfections existing. Apply at 97 wet/60 dry mils
- After TritoFlex products have fully dried, rinse off dried surface accelerator and perform water flood test
- Installation of specified protection course, insulation board, drainage mat, etc. commences after the waterproofing is installed
- Pouring of concrete topping slab directly over drainage board. In some situations, the topping slab is poured directly over the TritoFlex 2K rubber membrane