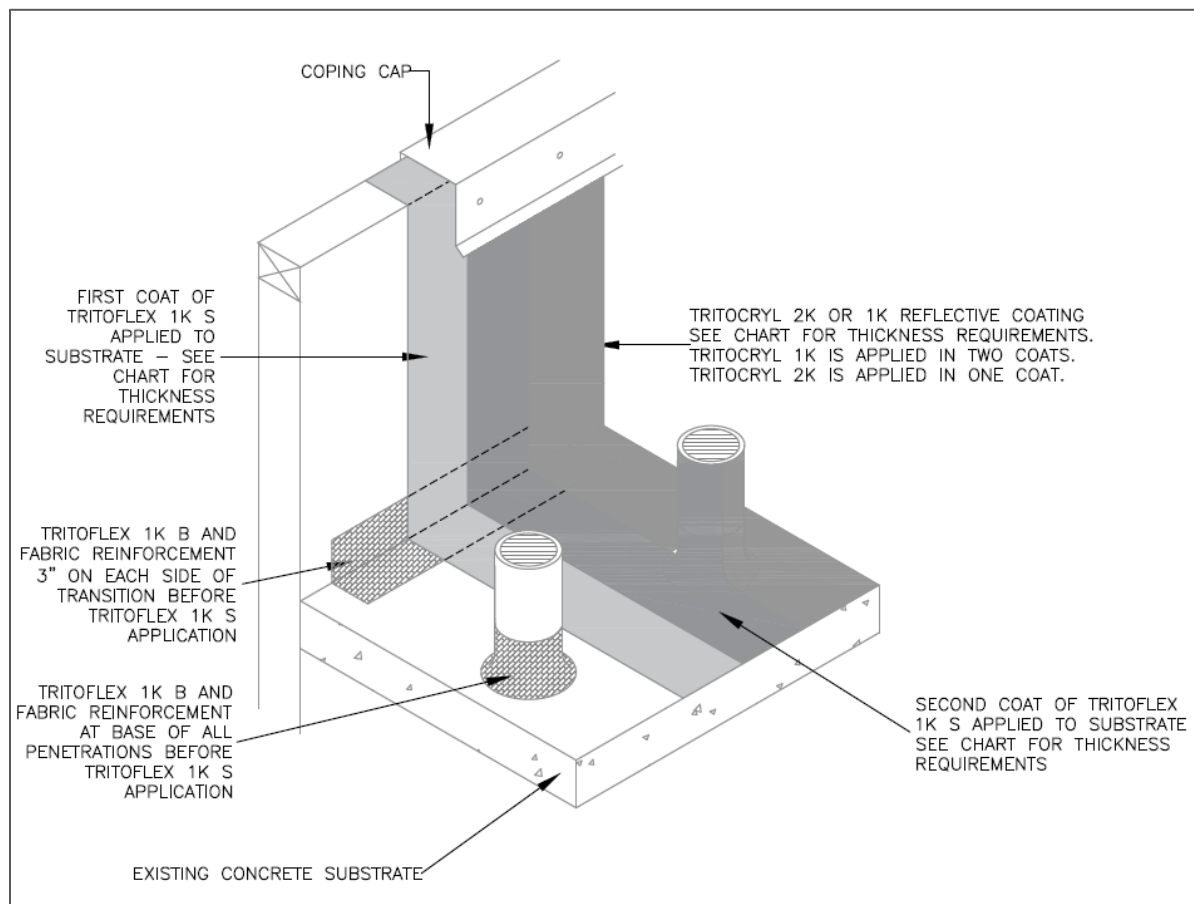


INSTALLATION GUIDE

TritoFlex 1K S Rubber – Concrete Roof System

Warranty Period	10 Years		15 Years	
	Min Dry Mils	Coverage Rate	Min Dry Mils	Coverage Rate
<i>TritoFlex 1K S Rubber</i>	40	24 sf/gal	60	17 sf/gal
<i>Top Coat</i>	20	50 sf/gal	20	50 sf/gal
<i>Granulated 1K S</i>	7	135 sf/gal	10	100 sf/gal



INSTALLATION GUIDE

TritoFlex 1K S Rubber Roofing System

The non-toxic TritoFlex 1K S seamless rubber membrane is ideal for creating a flexible, seamless waterproofing membrane over a new or existing concrete roof substrate. TritoFlex 1K withstands ponding water indefinitely and is cold spray-applied with zero VOC's. The liquid rubber product forms a flexible, durable, fully-adhered membrane without the need for open flames or glue to hold it down. Finished with the TritoCryl reflective topcoat, it becomes an energy efficient, renewable roof system.

Advantages:

- ✓ Withstands ponding water indefinitely
- ✓ Roof can be perpetually renewed
- ✓ Water-based, no VOC's, no odor
- ✓ Remains flexible in sub-zero temps
- ✓ ASTM tested; crack bridging technology
- ✓ 1200 % elongation with 650 psi tensile strength
- ✓ Seamless, self-terminating
- ✓ Highly reflective, energy-efficient

Quick Guide

Inspection

- Check the existing substrate for areas of damage or deterioration that may need repaired
- Check for moisture content using the plastic sheet method or moisture scanning tool

Preparation

- Pressure wash or air blast entire surface to ensure roof is free of moisture, loose dirt, oils, grease, and debris. Remove any loose or peeling coatings or mastics that may exist.
- Concrete cracks over 1/8" in width should be repaired using an approved quick-set mortar or TritoFlex 1K B and fabric.

Application

- Brush apply TritoFlex 1K B, embedding 4" Triton polyester fabric, around all penetrations, curbs, flashings, joints, drip edge, and angle changes.
- Spray apply first coat of TritoFlex 1K S at 30 wet mils to all concrete surfaces
- Allow first coat to cure for 6-12 hours, then apply second coat of TritoFlex 1K S at 35 wet mils to achieve minimum finish of 40 dry mils
- After TritoFlex 1K is fully cured, apply first coat of TritoCryl 1K or 2K reflective topcoat. If spraying Cryl 1K, back-roll the first coat and apply to 15 wet/10 dry mils.
- Apply second coat of topcoat to 15 wet/10 dry mils. Prevent water from ponding for 48 hours.
- If applying a granulated topcoat, broadcast 50 lbs. of granules every 100 sf into a wet 15 mil layer of TritoFlex 1K S. Blow all loose granules off and collect for re-use after fully cured.
- In areas where the roof is subject to foot traffic, apply liquid TritoWalk coating to create walkways. Apply by roller at 5 gallons/100 sf in two coats for a total of 50 mils dry