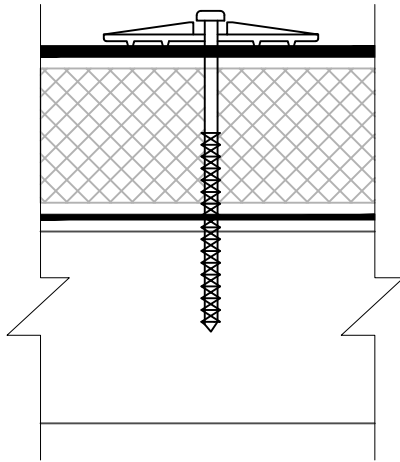


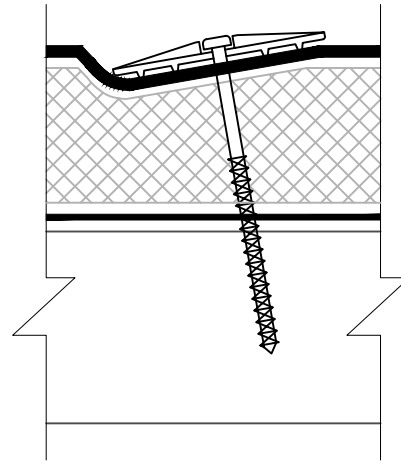
FASTENER TOO LOOSE



CAUSES:

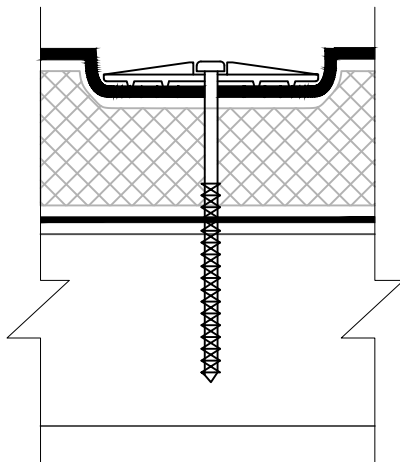
- FASTENER UNDER DRIVEN
- HOLE IN CONCRETE NOT DRILLED DEEP ENOUGH

FASTENER NOT PERPENDICULAR



OVER TIME, THE EDGE OF THE PLATE CAN WEAR THROUGH THE TOP AND BOTTOM MEMBRANES

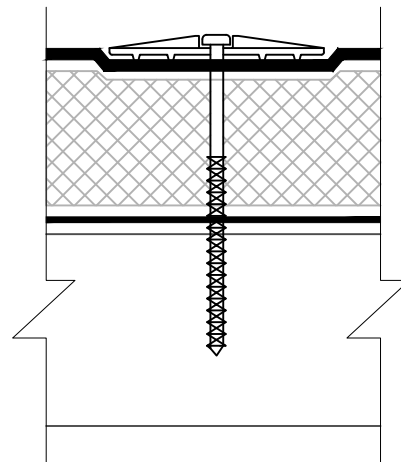
FASTENER TOO TIGHT



CAUSES:

- FASTENER OVER DRIVEN
- FASTENER TOO SHORT

CORRECTLY INSTALLED FASTENER



THERE SHOULD BE A SLIGHT DIMPLE IN THE MEMBRANE AROUND THE PLATE



TRITON PVC
FASTENER CONDITIONS
(NOT TO SCALE)

DETAIL NUMBER

PVC-UN-103